

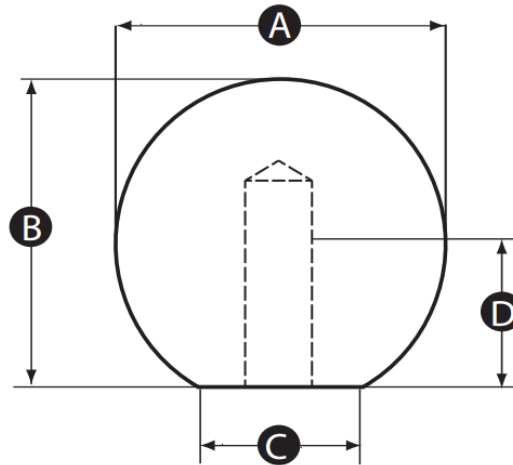
G07SFMK Push-fit Polished Stainless Steel Ball Knob

Features

- Stainless steel, heavy duty and highly polished knob
- Suited to applications where hygiene is paramount such as medical, pharmaceutical and catering equipment

Material

- Body: Stainless steel 304, highly polished
- Bore: Push-fit assembly



| Part No. | A | B | C | D | Bore Size - H7 Tolerance |
|----------------|----|----|----|----|-----------------------------|
| G07SFMK-15357P | 16 | 15 | 8 | 10 | 4 |
| G07SFMK-15358W | | | | | 5 |
| G07SFMK-15359S | 20 | 18 | 12 | 12 | 5 |
| G07SFMK-15360Z | | | | | 6 |
| G07SFMK-15361V | 25 | 23 | 15 | 16 | 6 |
| G07SFMK-15362R | | | | | 8 |
| G07SFMK-15363Y | 32 | 29 | 18 | 20 | 6 |
| G07SFMK-15364U | | | | | 8 |
| G07SFMK-15365Q | 38 | 35 | 22 | 24 | 6 |
| G07SFMK-15366X | | | | | 8 |
| G07SFMK-15367T | | | | | 10 |
| G07SFMK-15368P | 44 | 37 | 32 | 28 | 10 |